

WETOWN®



Power distribution equipment series



WETOWN Electric, (Wetown Busway Co., Ltd.), is a leading busway manufacturer. It traces its history back to 1974 in developing and manufacturing electrical distribution system. With over 30 years experience of busway, design, manufacturing and service, the company covers an area of 140,000 square meters, construction area of over 90,000 square meters, with world class manufacturing, full product line, and complete industrial chain of busduct.

Wetown offers the most complete portfolio of busway product & solution in the industry. Our solution ranges from low voltage to high voltage busway system, including lighting busway, compact busway, air insulated busway, cast resin busway, wind power busway, IPB, Non-seg and segregated busway system etc. Products are tested through 3C, the United States UL, European CE, the Netherlands KEMA, British ASTA, South America CIDET, Russian GOST-R and many other international certification authorities.

Wetown has established comprehensive system by accrediting ISO9001 quality management, ISO14001 environmental management, OHSAS18001 occupational health and safety, SA8000 social responsibility, service certification and certification of intellectual property management system.

Currently Wetown owns the largest manufacturing facility in Asia with state-of-art manufacturing facility, equipment and process, including an unique testing center, busway insulation electrostatic powder coating center, epoxy insulation line and automatic busway assembly lines.



Since 2011 up to now, Wetown's low voltage busduct taking the leading position among domestically and export volume ranked number ONE consecutively and is the global strategic partners of some world's top-500 companies, like GE and Honeywell.

Busduct product is having fine quality with excellent service, at the forefront of National busduct industry. Our products have been successfully installed in Beijing Olympics Bird's Nest, Shanghai World Expo and other world-famous iconic project in various applications of power plant, commercial real estate, finance and insurance, new energy, data center, petrochemical, metallurgy, shipbuilding, automobiles, etc., and exported to over 30 countries and regions in Southeast Asia, Australia, Europe, the Middle East, North and South America, Russia, South Africa...etc.

Today Wetown's positive global vision and innovative spirit, adherence to the "professionalism, brand and globalization" development strategy, "sincere, professional, excellent" service concept, keeps pushing Wetown into a new era of being a global benchmark in busway business.

KYN28A-12 Metal Clad Withdrawable Switchgear

Product overview

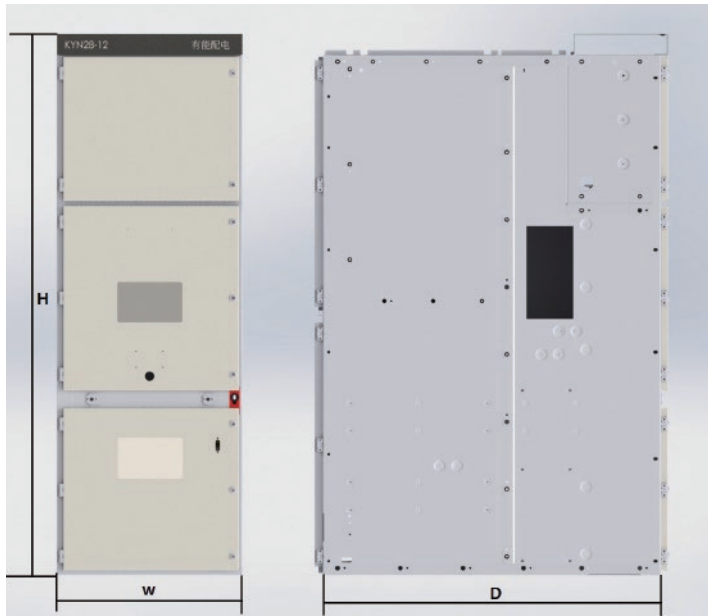
KYN28A-12 metal clad withdrawable switchgear. It is suitable for three-phase AC 50/60Hz, 3.6-12kV single busduct and single busduct subsection power system. And it is used for receiving and distributing electric energy and controlling, protecting and monitoring circuit.



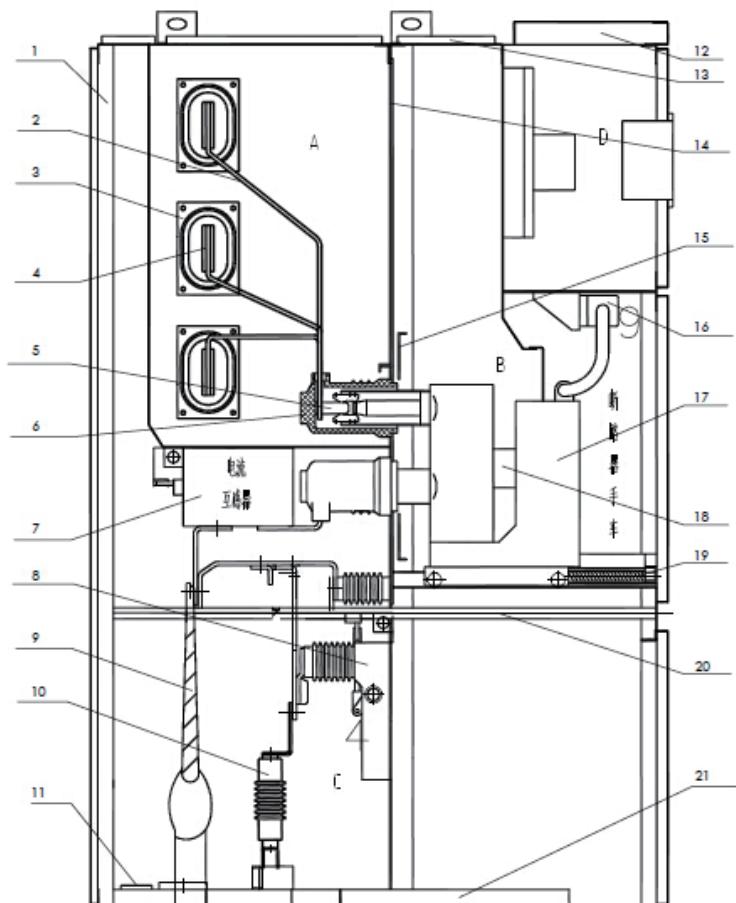
Technical parameter

Name		Unit	Parameter
Rated voltage		kV	3.6、7.2、12
Rated insulation level	1min power-frequency withstand voltage	kV	42
	Lightning impulse withstand voltage (peak)	kV	75
Rated frequency		Hz	50
Main busway rated current		A	630、1250、1600、2000、3150、4000
Branch busway rated current		A	630、1250、1600、2000、3150、4000(Air cooling)
Rated short-time withstand current		kA	25、31.5、40
Rated peak withstand current		kA	63、80、100 (125)
Protection level			IP4X (shell), IP2X (open breaker room door)

Product mix

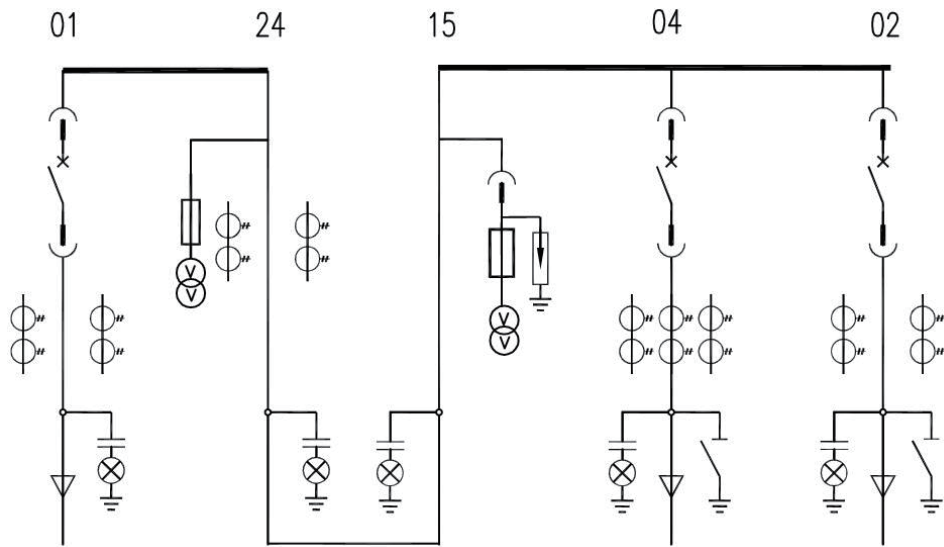


Height size (H)		mm	2200
Width size (W)	Drop-out current $\leq 31.5\text{kA}$	mm	650
	Branch bus rated current $\leq 1250\text{A}$		800
	Drop-out current 40kA	mm	1000
	Branch bus rated current $> 1250\text{A}$		
Frame depth size (D)		mm	1500 1660
Back door (cover) size		mm	30

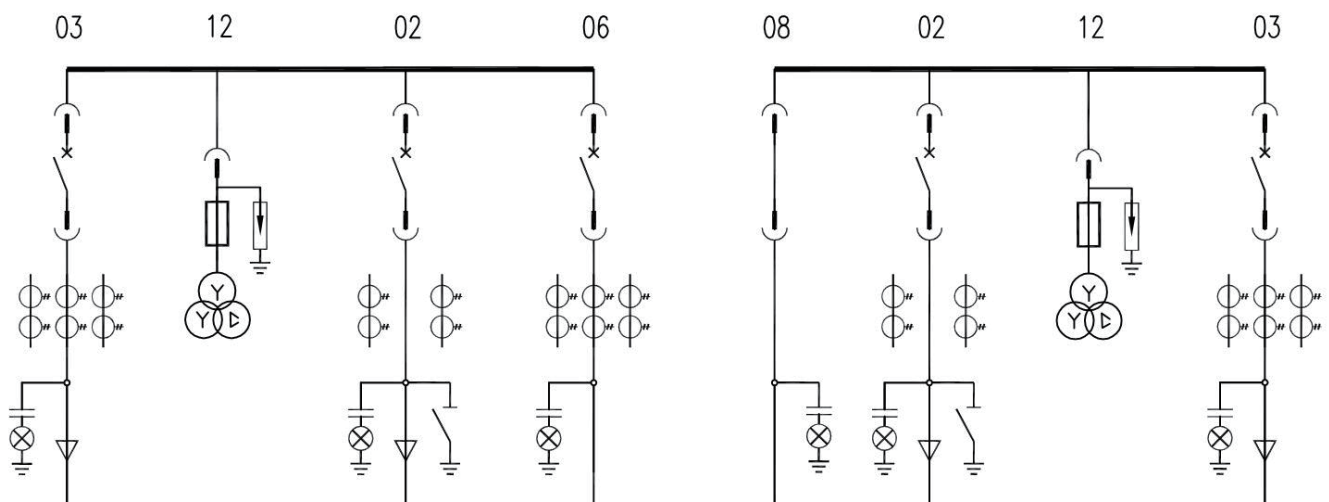


- A Busbar chamber
- B Handcart of circuit breaker chamber
- C Cable compartment
- D Relay instrument chamber
- 1 Shell
- 2 Branch bushing
- 3 Busbar bushing
- 4 Main busbar
- 5 Fixed contact device
- 6 Fixed contact
- 7 Current transformer
- 8 Earthing switch
- 9 Cable
- 10 Lightning arrester
- 11 Main grounding busbar
- 12 Control small busbar chamber
- 13 Pressure relief device
- 14 Partition
- 15 Partition (valve)
- 16 Secondary plug
- 17 Handcart of circuit breaker
- 18 Heating device
- 19 Extraction type horizontal separator
- 20 Earth switch operating mechanism
- 21 Floor

Example of program application



Application examples a



PV12-12 Indoor AC Metal Switchgear

Product overview

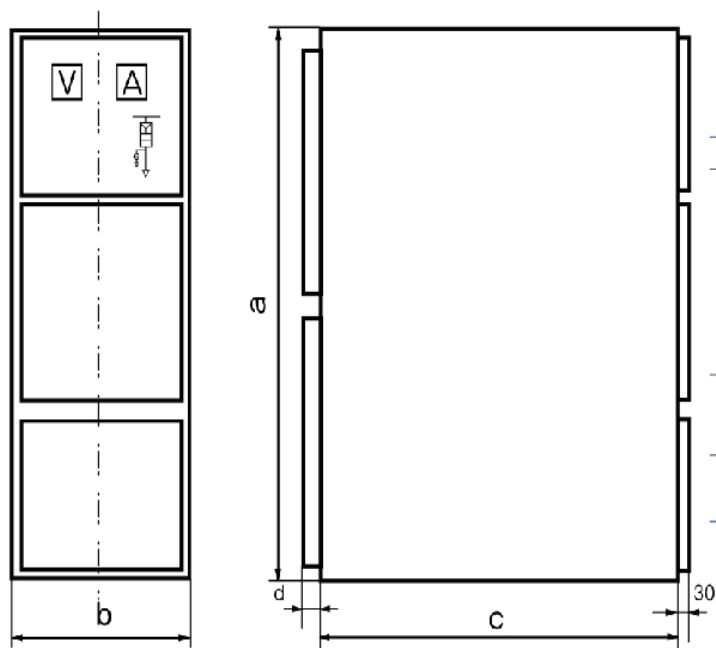
PV12-12 metal clad withdrawable switchgear is GE authorized type in our company. It is suitable for three-phase AC 50/60Hz, 3.6-12kV single busduct and single busduct subsection power system. And it is used for receiving and distributing electric energy and controlling, protecting and monitoring circuit.



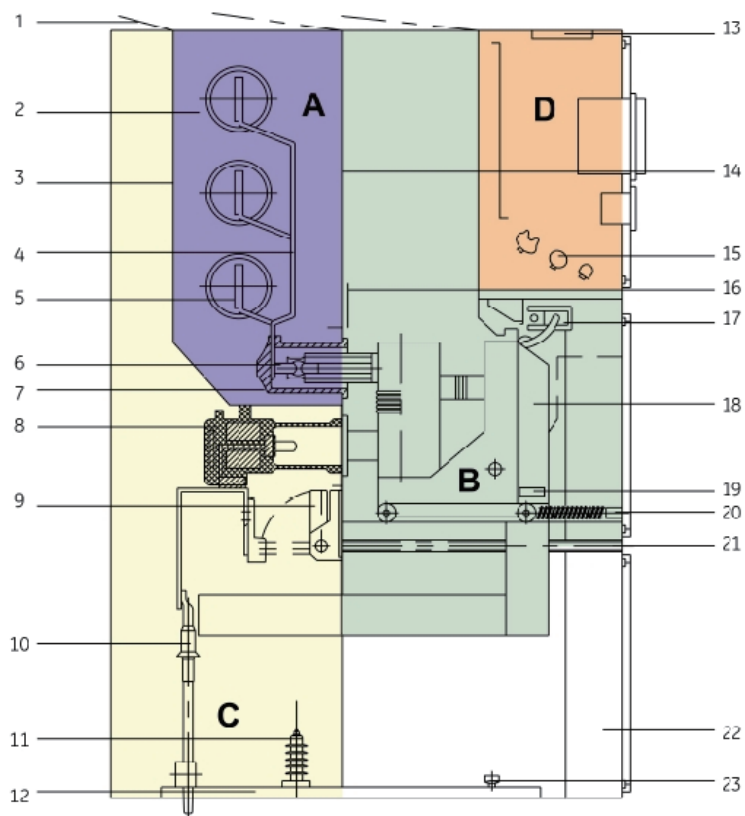
Technical parameter

Name		Unit	Parameter
Rated voltage		kV	3.6、7.2、12
Rated insulation level	1min power-frequency withstand voltage	kV	42
	Lightning impulse withstand voltage (peak)	kV	75
Rated frequency`		Hz	50
Main busway rated current		A	630、1250、1600、2000、2500、3150、4000
Branch busway rated current		A	630、1250、1600、2000、2500、3150、4000(Air cooling)
Rated short-time withstand current		kA	25、31.5、40
Rated peak withstand current		kA	63、80、100 (125)
Protection level			IP4X (shell), IP2X (open breaker room door)

Product mix

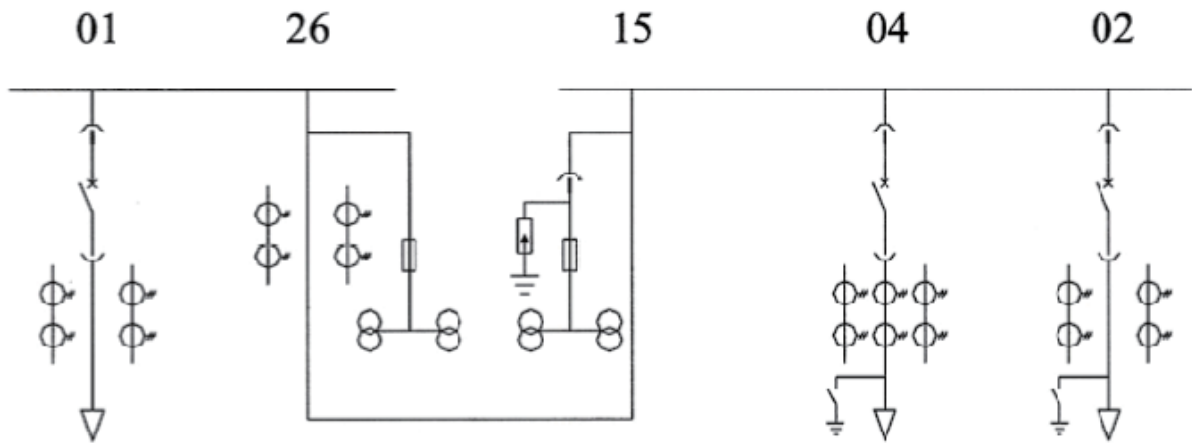


Height size (a)		mm	2200
Width size (b)	Drop-out current $\leq 31.5\text{KA}$ Branch bus rated current $\leq 1250\text{A}$	mm	650
			800
	Drop-out current 40KA Branch bus rated current $\leq 1250\text{A}$		840
	Drop-out current 40KA Branch bus rated current $> 1250\text{A}$		1000
Frame depth size (c)		mm	1550 1590 *
Back cover size (d)		mm	30

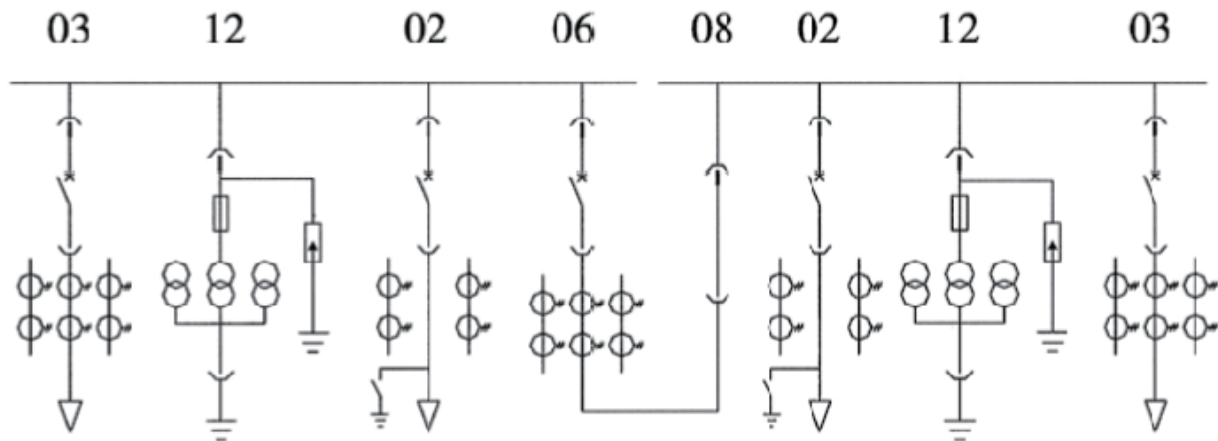


- A Busbar chamber
- B Handcart chamber
- C Cable chamber
- D Low pressure chamber
- 1 Pressure release plate
- 2 Shell
- 3 Loading and unloading type partition
- 4 Branch busway
- 5 Main busway
- 6 Isolated contact device
- 7 Primary contact box
- 8 Current transformer
- 9 Earth switch
- 10 Cable sealing terminal
- 11 Zinc oxide lightning rod
- 12 Floor
- 13 Small busbar terminal
- 14 Loading and unloading type partition
- 15 Terminal board
- 16 Valve
- 17 Secondary plug
- 18 Vacuum circuit breaker
- 19 Handcart Sliding ground
- 20 Screw rod mechanism
- 21 Grounding switch operation structure
- 22 Control wire slot
- 23 Main grounding busbar

Example of program application



Application examples a



Application examples b

Low-voltage Switchgear MLS-V AC Low Voltage Switchgear

Product overview

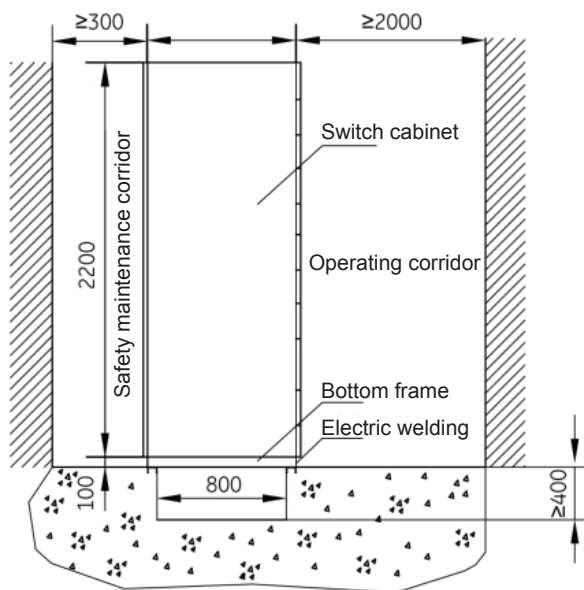
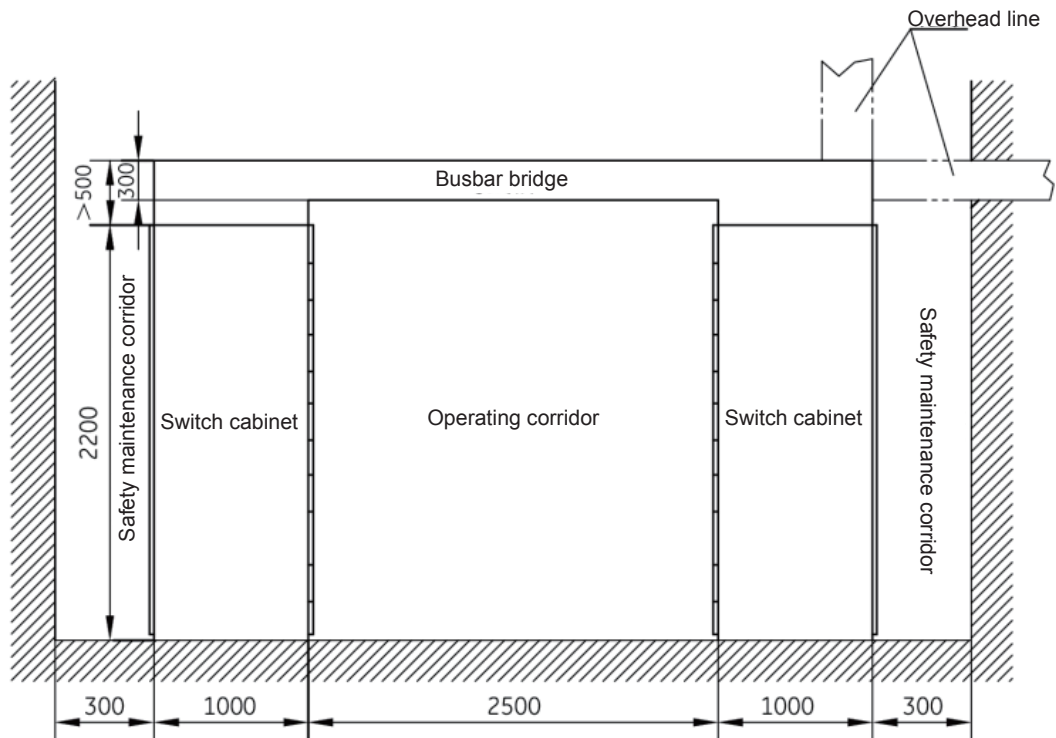
MLS-V low voltage draw-out switchgear is GE authorized type in our company. It is a combination type of low voltage switchgear assembled with standard modules. And it is applicable to AC 50/60Hz, rated operation voltage 690V and below, the power supply and distribution system, used for power generation, transmission, power conversion and power consumption equipment control.



Technical parameter

Rated operating voltage	V	Main current	400、480	690
		Auxiliary circuit	AC220、AC380、DC110、DC220	
Rated insulation voltage	V	Main current	690	1000
Rated impulse withstand voltage (1.2/50 μ s)	kV	Main current	6、8	
Rated operating current	A	Main busway	≤ 6300 、 ≤ 3600 (MLS-V Double Side Cabinet)	
		Vertical busway	1000、1250、1600 (extraction), ≤ 2500 (plug-in Type)	
Rated short-time withstand current	kA/1s	Main busway	50、65、80、100	
		Vertical busway	50、65、80、90	
Rated peak withstand current	kA/0.1s	Main busway	105、143、176、220	
		Vertical busway	105、143、176、198	

Product mix



MNSH Low-voltage Withdrawable Switchgear

Product overview

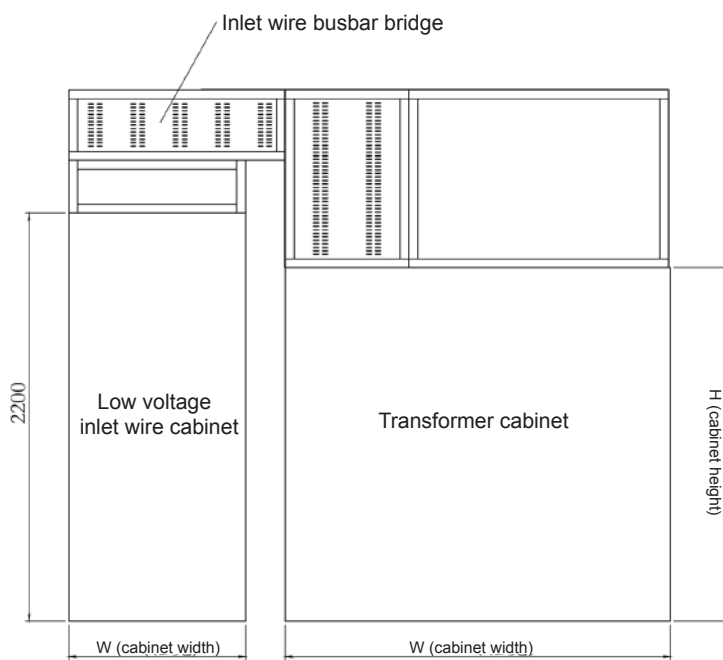
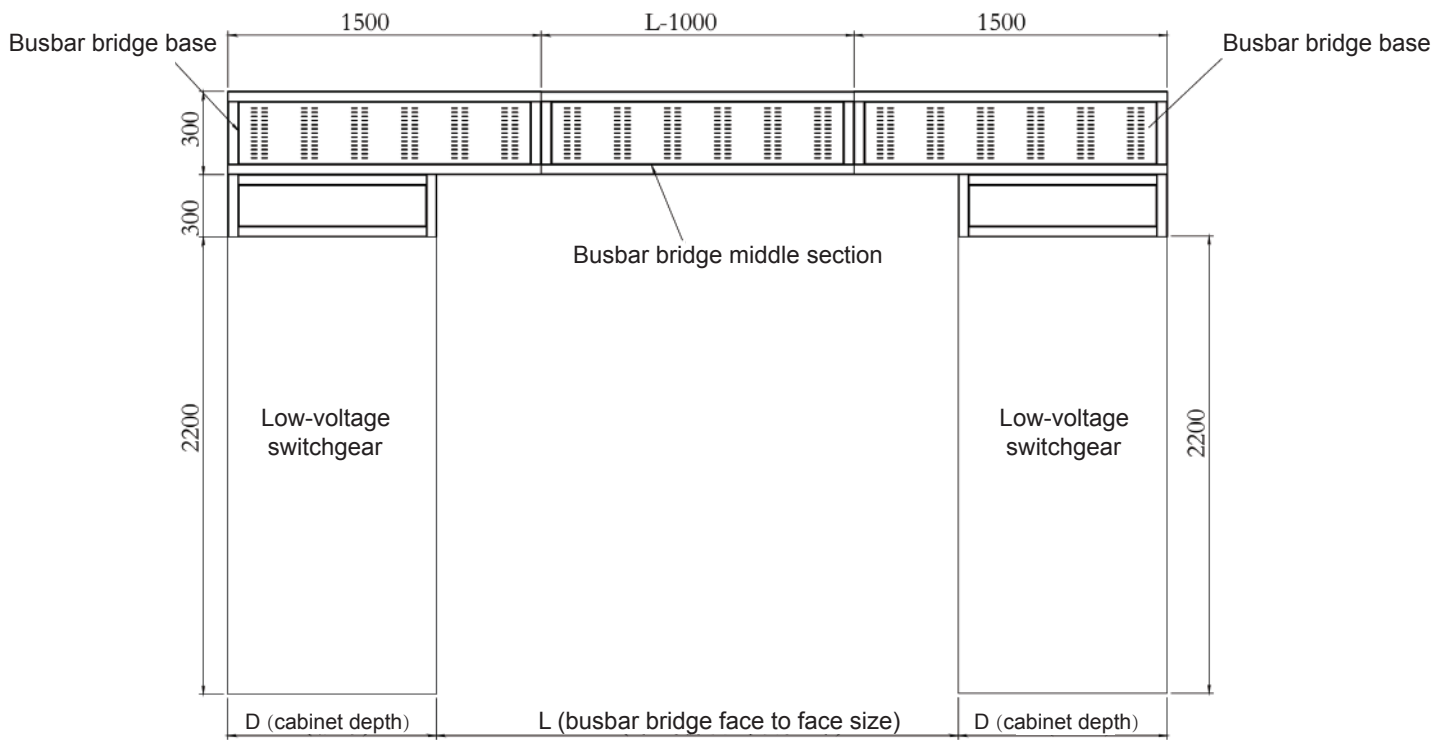
MNSH AC low voltage switchgear is a combination type of low voltage switchgear assembled with standard modules. And it is applicable to AC 50/60HZ, rated operation voltage 690V and below, the power supply and distribution system, used for power generation, transmission, power conversion and power consumption equipment control.



Technical parameter

Rated operating frequency (Hz)		50 / 60
Rated operating voltage (V)		400
Rated insulation voltage (V)		660 / 690
Rated punch withstand voltage (KV)		8
Overvoltage level		III
Class of pollution		3
Maximum operating current (A)	Horizontal busbar	6300
	Vertical busbar	2000
Rated short-time withstand current RMS (1s)/ peak (KA)	Horizontal busbar	50/105、80/176、100/220
	Vertical busbar	50/105、80/176
Shell protection class		IP30、IP40
Outline dimension (high *wide *deep)		2200*600 (800、1000) *600 (800、1000)

Product mix



Power Distribution Switchgear Series

PZ30 series modulus terminal distribution Switchgear

The main structure module has the box body , face ply , transparent plastic face guard or metal face guard , assembles orbit electricity rows , distance of zero rows, the box inner uses modulus to spend the component assembling , the operation handle external dew, electrified the body and component other part cover the Yu face cover inner equally , open face guard being OK to go to the lavatory operation, ensures that using safety reliably. Assemble way being that bundle of wall is dark mark install and embed dark dress of wall.



rated operation voltage	rated insulation voltage	max operation current	frequency	IP	short time withstand current
AC220/AC380	AC380	125	50	IP30	10

XTM Series distribution Switchgear

Have the various structure form. The box body adopt welding style , sheet material to be allotted average steel plate and stainless steel steel plate. The outside door plank the glass door also having more beautiful expert having metal face ply; The inner structure form structure having two storied gate structure and board queen connection according with Beijing waiting for area to demand. Be a product's turn to have bundle of wall clearly, to hold the installation way that the wall holds with secretly with and embed. The grade satisfies high protection outdoors the box call for. That series product has an applicability expanding , the structure intensity is high , handles safety , protects the advanced characteristic of grade. Broad Yong Yu various match power consumption lieu.

rated operation voltage	rated insulation voltage	max operation current	frequency	IP	short time withstand current
AC220/AC380	AC380	100	50	IP30	4.5

Unit (mm)

modulus	H	W	D	
TYA-08	200	241.6	95	
TYA-12	200	313.6	95	
TYA-16	220	385.6	95	
TYA-20	230	457.6	95	
TYA-24	355	313.6	95	
TYA-36	780	313.6	95	



XL series distribution Switchgear

The XL series power distribution box body adopt a form not to be smaller than dleta2mm steel plate fabrication but be accomplished , has to solder style and C section bar assembling style. The structure intensity is high , the inside installation is rational, convenience of customers cable turnover , operation be maintained. Apply to 220 V or 380 V exchanging 50 Hz , fixed voltage, the power distribution system is hit by fixed voltaic 630 As and following three-phase three-way , four-wire or five gleams of low pressure , is do use of driving force or illumination power distribution, and is do in low pressure in navar to control usage.

rated operation voltage	rated insulation voltage	max operation current	frequency	IP	short time withstand current
AC220/AC380	AC380	630	50	IP30	10



W	H	D	W	H	D
700	1800	350 400 500 600	1000	1800	350 400 500 600
	1700			1700	
	1600			1600	
600	1800		900	1800	
	1700			1700	
	1600			1600	
500	1800		800	1800	
	1700			1700	
	1600			1600	

Low voltage integrated distribution switchgear

JP low voltage integrated distribution switchgear is a Novel low-voltage integrated distribution switchgear which has the function of power distribution, control, protection, reactive power compensation, electric energy metering and so on. At the same time, it can have leakage protection function according to user requirements. This product has many advantages such as novel and reasonable structure, high degree of protection, convenient maintenance and repair. Our product meets GB7251.1 and passed the 3C certification. It is an ideal low voltage complete set device in the current power network transformation.



KYN61-40.5 Indoor AC Metal Switchgear

Product overview

KYN61-40.5 metal clad withdrawable switch cabinet. It is suitable for three-phase AC 50/60Hz, 40.5kV single bus and single bus subsection power system. And it is used for receiving and distributing electric energy and controlling, protecting and monitoring circuit.



Technical parameter

Number	Item	Unit	Parameter	
1	Rated voltage	kV	40.5	
2	Rated frequency	Hz	50/60	
3	Rated insulation level	kV	phase-phase, phase-earth Isolating fracture	
			95	115
			185	215
		V	2000	
4	Rated current	A	1250、1600、2000、2500	
5	Rated short-time withstand current	kA/4s	25、31.5	
6	Rated peak withstand current	kA	63、80	
7	Auxiliary control circuit rated voltage	V	-110、-220V、-220	
8	Protection class		IP4X(housing), IP2X(open the door of Compartment room and circuit breaker room)	
9	Weight	Kg	About 2000	

ZBW Series Occident-type Substation

Product overview

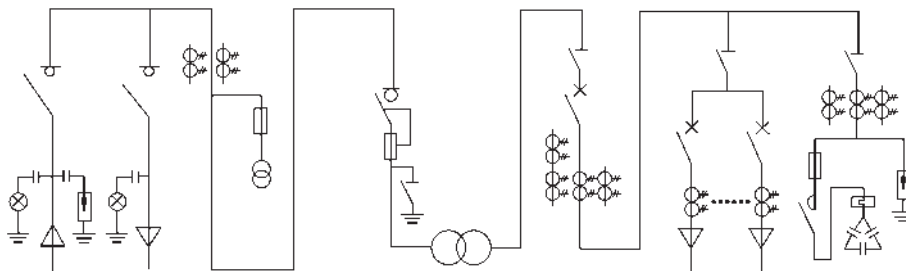
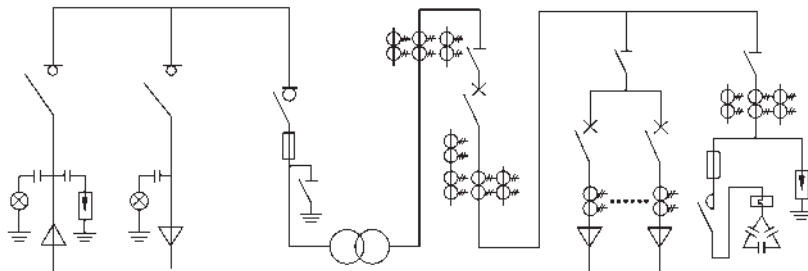
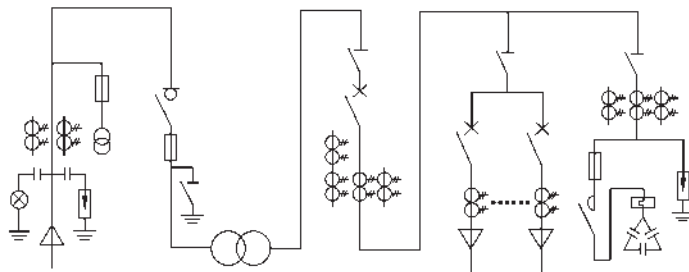
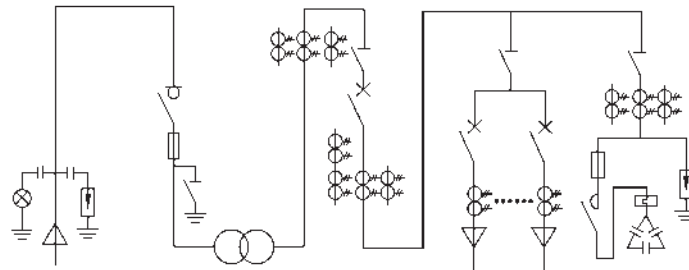
Occident-type substation(combination substation) is a complete distribution equipment which is made up of high voltage switchgear, transformer, low voltage distribution equipment, low voltage intelligent switch and reactive power automatic compensation.It has the function of remote control, telemetering, remote meter and teleadjusting. Combination substation can be used in doors and outdoors. It is widely used in industrial park, residential area, commercial centre, public place, airport, wharf, metro, hotel, school, hospital and highly liquid places such as construction site, mine, oil field, temporary electricity place.



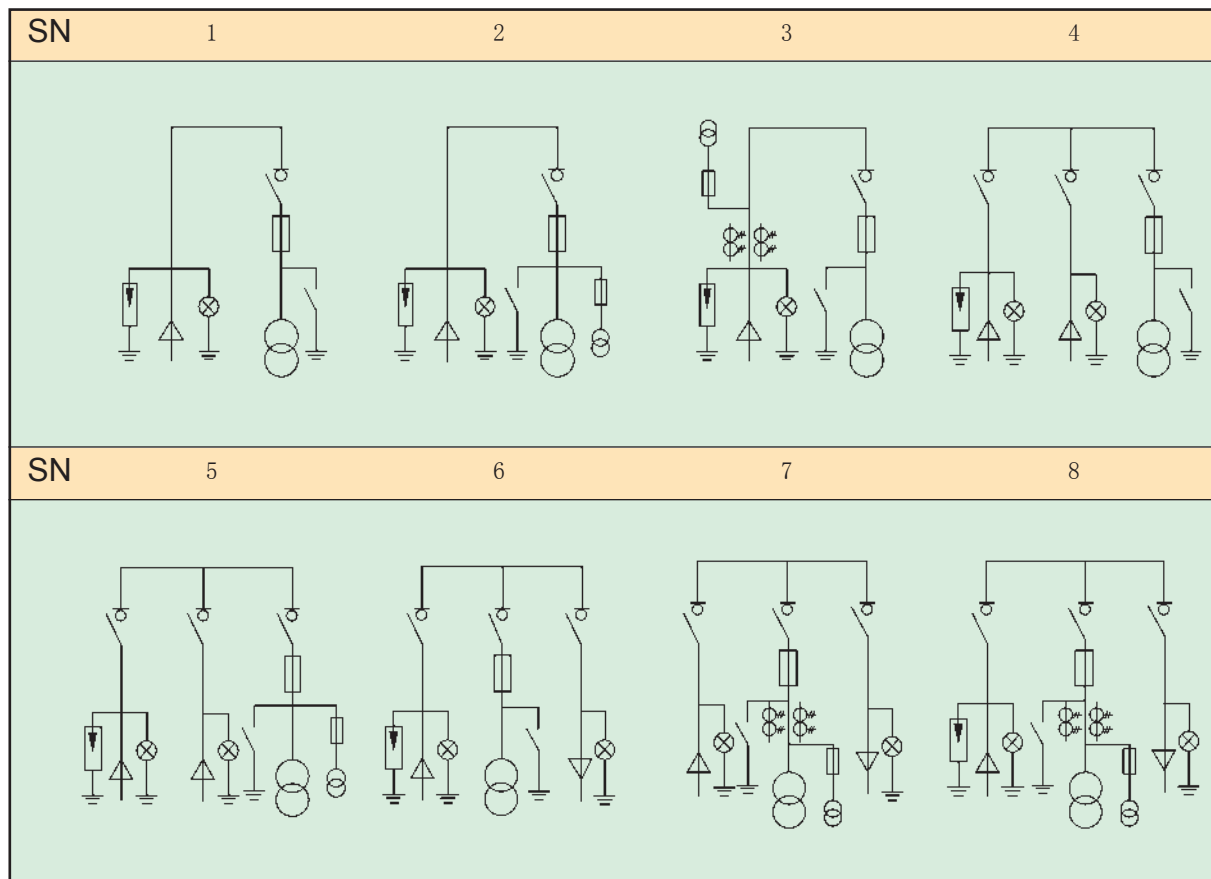
Main technical parameters

	Item	Unit	Parameter	
High voltage unit	Rated frequency	Hz	50	
	Rated voltage	kV	7.2	12
	Rated current	A	400、630、1250	
	Transfer current	A	1200~2000	
	Rated short-time withstand current	kA	12.5(2s/4s), 16(2s/4s), 20(2s/4s)	
	Rated peak withstand current	kA	31.5/40/50	
	Power frequency withstand voltage Phase-to-ground and phase-to-phase/ Isolated fracture	kV	32/36	42/48
	Lightning impulse withstand voltage Phase-to-ground and phase-to-phase/ Isolated fracture	kV	60/70	75/85
	Rated short-circuit breaking current (Current limiting fuse)	kA	31.5	
	Breaking load transformer capacity	kVA	1600	
Transformer unit	Rated voltage	kV	7.2、12	
	Rated capacity	kVA	30~1600	
	Tapping range	%	$\pm 2 \times 2.5\%$ 、 $\pm 5\%$	
	Connection symbol		Yyn0、Dyn11	
	Impedance voltage	%	4、4.5、6、8	
* Low voltage unit	Rated voltage	V	380/220、660/380	
	Rated current of main circuit	A	50~2500	
	Branch current	A	50~800	
	Rated short-time withstand current of main circuit	kA	15(1S)、30(1S)、50(1S)、65(1S)	
	Rated peak withstand current of main circuit	kA	30、63、110	
Housing	IP degree(conventional product)		High-voltage chamber: IP33 Transformer room: IP23 Low-voltage chamber: IP33	

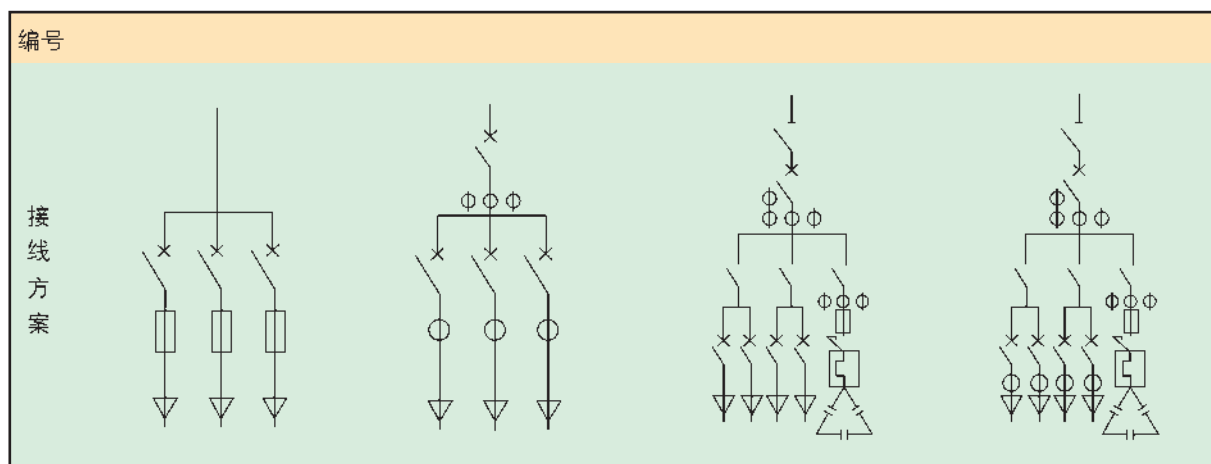
Electrical measurement scheme



High voltage circuit connection scheme



Low voltage circuit connection scheme



Main Achievements



The National Stadium



Beijing's Capital Airport



Shanghai General Motors Co., Ltd



Wanda Plaza



Bird's Nest stadium



Vietnam He Fa Steel Plant